



## 9 DAY SOUTH AFRICA

### BACK-COUNTRY CAMPING SAFARI

***This is a brand new Safari being introduced in 2021.***

Aimed at adventurous pilots and their partners wanting to explore the most remote parts of South Africa, sleeping out in tents near the aircraft for some of the nights on Safari, and experiencing the thrill of traversing the heart of South Africa wildest areas. The adventure includes the spectacular Wild Coast, the Eastern Cape Karoo with its semi-desert scenery, to the dry sand dunes and salt pans of the northern Kalahari and the Sandstone mountains of the eastern escarpment.

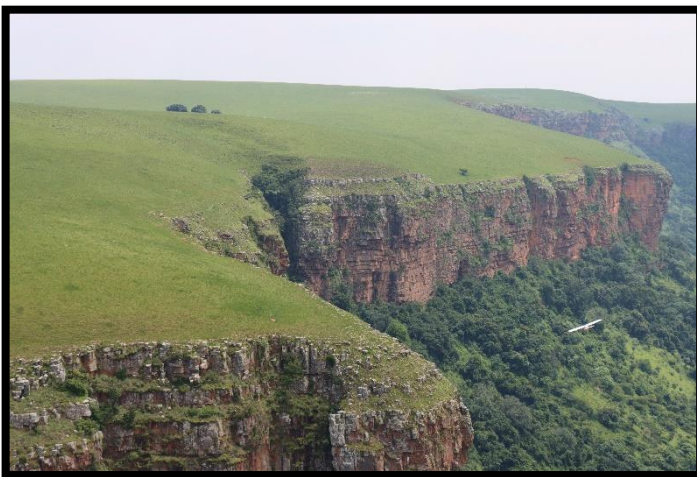
Accommodation is primarily in small tents (equipment provided by ABS), however there are a few nights on safari in comfortable lodging/bush camps. As far as possible, we provide as many creature comforts as we can with the limited space! An additional "cargo" aircraft, carries some of the extra equipment and supplies.

**COSTS - \$250/HR PER AIRCRAFT, MIN 3 AIRCRAFT & 5-6 PARTICIPANTS + 1 "CARGO" PLANE @\$150/HR**

**ACCOMMODATION - \$1000 PER PERSON SHARING (Includes 8 Nights Accommodation on Safari, Camping Equipment rental, all meals and refreshments.**

**FROM: \$5500 PER PERSON (6 PARTICIPANTS). Includes 30 Hrs Safari Flying and 8 nights accommodation.**

**Safari Day 1 – Eva's Field to the Wild Coast** - Depart in the morning once ready, taking a scenic route through A Valley of 1000 Hills, then routing for the coast south of Durban, following the coastline to the spectacular Wild Coast with it remote beaches, waterfalls cascading into the sea, and the destination for our first night, camping out near the remote Waterfall Bluff, overlooking the sea from a 500ft high cliff. +-150nm and +- 3hrs flying time.



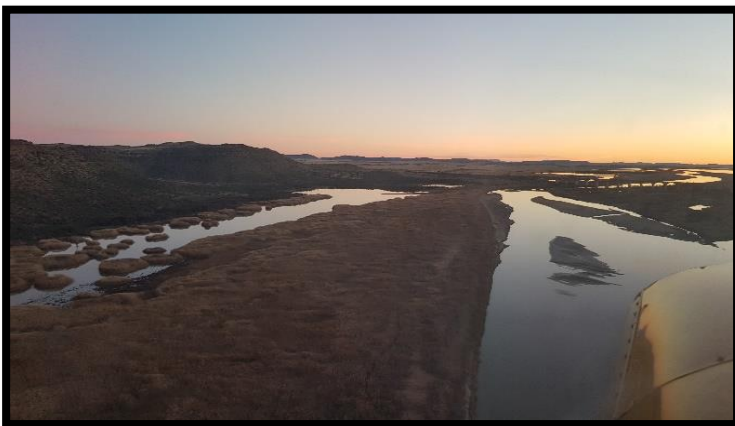
*Flat-topped "Table Mountain" in the Valley of 1000 Hills.*



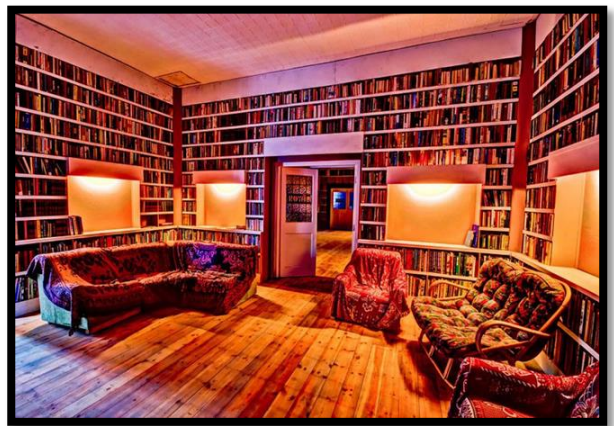


*Spectacular Waterfall Bluff on the Wild Coast*

**Day 2 – Wild Coast to Bethulie** – We continue south along the Wild Coast before cutting inland along one of the mighty Rivers running to the coast. We wind our way inland, through the highlands of the eastern Cape, before reaching the Orange River at Aliwal North. We continue along South Africa’s largest river, winding through semi-arid countryside, arriving at the massive Gariep Dam at Bethulie, where we spend the night in the Royal Hotel, an historic landmark in the town. Owner Anthony Hocking is an historian and great storyteller, with many interesting historic facts at his fingertips. He also has the largest private collection of Vinyl records and books in South Africa. If time permits we tour the local Anglo-Boer war memorial and other historic sights in the area. Approx. 300nm and 4.5hrs flying.



*Approaching the Bridge over the Orange River at Bethulie.*



*Royal Hotel Bethulie*



**Day 3 – Bethulie to Thuru Game Lodge via the Vanderkloof Dam.** Explore the mighty Orange River and the 2 huge Dams, the Gariep and Vanderkloof, before ending the day at the luxurious Thuru Game Lodge. Evening game drive to see the wildlife on this beautiful reserve, including rhino, buffalo and many other species. Approx. 280nm and +- 4.5 hours of flying time.



*Approaching the Vanderkloof Dam along the Orange River (left) and Sundowners at Thuru Game Lodge (above)*

**Day 4 – Thuru Game Lodge to Koppieskraal Pan.** We continue along the Orange River from Thuru Lodge, passing Upington and continuing on to the famous Augrabies Falls, a huge landmark and National Park along the Orange River. After a break for coffee and a meal, we continue north to Goerapan, a salt pan in the Kalahari dunes, before ending the day at the incredible Koppieskraalpan, where we camp the night out under the Kalahari sky. 240nm, +-4 hrs flying.



**Day 5 – Koppieskraal Pan to Kgalagadi Game Lodge** bordering the Kgalagadi Transfrontier National Park. We spend the morning flying between the stunning sand dunes and salt pans of this remote region, landing late morning at the Kgalagadi Game Lodge, where we will spend 2 nights, including a non-flying day where we take a 4x4 Vehicle into the

National Park, home to some of the most beautiful Black-maned Kalahari lions and other wildlife. 120nm, +-2 hours flying time.



**Day 6 – Rest Day** – spent in the Kgalagadi National Park. We take a picnic lunch with us into the park, and spend the day game viewing. The Park is famous for its large predators and abundance of Oryx and Springbuck.

**Day 7 – Kgalagadi to Grootfontein near Kimberley** – we fly to a private airstrip on a farm near Kimberley, where we camp the night near the planes. On route, we stop from time to time on small airfields, or remote salt pans, winding our way through the 285nm we need to cover that day. +-4.5 hours flying.



*Left: One of the many dry pans scattered throughout the Northern Cape.*



**Day 8 – Kimberley to Sandstone** – we cross the inland plateau, over miles of rolling grassland, ending the day in the sandstone hills of the Eastern Free State at an historic destination, aptly named “Sandstone Estate”, a large farming operation that is home to a museum of antique trains, tractors, steam engines, military vehicles and other incredible collectable items. We overnight in their quaint accommodation. Approx. 175nm, +-3hrs flight time.



*Steam locomotive on the private railway track at Sandstone Estate*



*A small part of the museum collection of vintage trucks, tractors, implements and wagons*

**Day 9 – Sandstone to Eva’s Field** – The last day of the trip has us crossing the Drakensberg Mountain Range, and descending into the Kwazulu-Natal Midlands, for our home base of Eva’s Field. Approx. 150nm, +-3 hours flying time.

TOTAL FLYING TIME: +-30 HRS

COSTS: **from US\$5500 per person.** Minimum of 5 participants in 3 Aircraft with guide pilot and additional Cargo Plane.

Included in the Rates:

- **Includes 30 hours of Safari Flying.** *This is the minimum number of hours for the Safari, and are not refundable should the Safari be affected by weather or other circumstances beyond our control. Any extra hours flown will be billed at the standard rate of \$250/hr.*
- **Includes all meals and accommodation while on Safari.** *(Please note this does not include the cost of accommodation prior to or after the completion of the Safari).*
- **Includes aircraft, fuel, instructor/safety pilot/s and all logistical backup services required while on safari.**
- **Collection and return from Pietermaritzburg Airport, and transfer to your accommodation prior to the Safari departure.**
- **Shuttle to and from Eva’s Field, our base.**

Not Included in Rates:

- Accommodation prior to or after the 9 Day Flying Safari.
- Pilot License Validations and local flying prior to the Safari.
- License Validation administration fee is \$100. Minimum 1 Hour validation test flight @\$200
- Alcoholic beverages
- Additional hours flown
- Additional nights in particular accommodation due to being grounded by bad weather.
- \$250 Insurance Excess Payment. Pilots are required to purchase a sub-insurance policy to cover the deductible portion of the Flying Frontiers Insurance policy.

Terms and Conditions:

Unless you are an experienced taildragger or bush pilot, you will be required to arrive 3-4 days prior to the start of your Safari, in order to complete your South African license validation, and participate in our Advanced Bushflying Course.

This involves approx. 5-10 hours of individual instruction on our Bush Planes (either Savage or Savannah), and provides you with the necessary skills and confidence to take on the adventure of Bush Flying in Africa. The cost of the course is \$200 per flying hour (\$1000-\$2000).

We arrange excellent accommodation nearby prior to and after the Safaris, and the cost is approx. \$75 per night per person, meals included.

**RELEASE FROM LIABILITY:** Each safari participant will be required to sign a “Liability Release” form before departure on a Safari. The content of this document is two-fold: 1) that the safari participant broadly acknowledges his or her own responsibility for his or her own actions in participating in a self-fly Safari, and any subsequent consequences; 2) the safari participant agrees that Flying Frontiers and African Bushflying Safaris will not be held liable for injury, death, damages or other loss suffered by the safari participant arising from his or her participation in a Flying Safari.

***As far as possible, we remain on schedule, but do not take risks with weather. We fly strictly VFR, and the guide/instructors make the final decision on weather and other conditions.***

***In the event we are required to spend an additional night/s, these are billed as extras. We do as far as possible try to get refunds for nights not spent on route, but this is not guaranteed. If lodges listed are not available for the specific Safari Dates, African Bushflying Safaris has the right to choose alternative accommodation in the similar area.***